



Strategic Green Infrastructure

Corridor Mapping Project

Methodology and Audit Report

South Gloucestershire Council

Final Draft Report for Adoption

Prepared by LUC

October 2024

Version	Status	Prepared	Checked	Approved	Date
1	Draft for Council input	G Tooze	M Cooke	D Manson	20.10.2021
2	Draft (Chapters 5-13 inclusive)	G Tooze, L Jewitt, I King	M Cooke	D Manson	11.11.2021
3	Final Draft (Chapters 1-14)	G Tooze	M Cooke	D Manson	14.12.2021
4	Final Draft	G Tooze	M Cooke	D Manson	21.01.2022
5	Consultation Report	G Tooze	M Cooke	D Manson	04.02.2022
6	Stage 2 update following consultation – interim final draft	R Hammonds, L Jewitt	R Hammonds	D Manson	03.04.2023
7	Stage 2 update following consultation – final draft	R Hammonds	R Hammonds	D Manson	10.07.2023
8	Final Draft Report for Adoption: Stage 3 update following Local Plan consultation feedback	L Jewitt	D Manson	D Manson	18.10.2024



Land Use Consultants Limited

Registered in England. Registered number 2549296. Registered office: 250 Waterloo Road, London SE1 8RD. 100% recycled paper

Strategic Green Infrastructure Corridor Mapping Project

Contents

Appendix A	229
Current and Emerging Strategic GI Programmes and Projects	
South Gloucestershire Strategic GI Programmes	
Appendix B	247
Key Viewpoints	
Appendix C	254
Boundary rationalisation decision-making	
Appendix D	265
Background to GI assets	
References	267

Table of Tables

Table A.1: Current strategic GI programmes (Produced January 2022, updated August 2024).	234
Table B.1: Strategic Viewpoints	249
Table B.2: Local Viewpoints	252
Table C.1: Corridor A	257
Table C.2: Corridor B	257
Table C.3: Corridor C	258
Table C.4: Corridor D	259

Contents

Table C.5: Corridor E 260
Table C.6: Corridor F 261
Table C.7: Corridor G 261
Table C.8: Corridor H 261
Table C.9: Corridor I 262
Table C.10: Corridor A 262
Table C.11: Corridor B 263
Table C.12: Corridor C 263
Table C.13: Corridor D 263
Table C.14: Corridor I 264
Table D.1: Core Strategy Appendix 3 GI asset list 265
Table D.2: GI SPD asset list 266

Table of Figures

Figure A.1: Catchment Delivery Framework 233
Figure B.1: Map of the strategic viewpoints described in Table B.1 248

Appendix A

Current and Emerging Strategic GI Programmes and Projects

A.1 Aligned with local and regional strategies and plans, the portfolio of South Gloucestershire strategic GI and Nature Recovery programmes continues to evolve. The portfolio includes landscape scale and site-specific programmes and projects, and programmes being delivered across the area at network scale.

A.2 The following list of current programmes relates to the situation in August 2024, and aligns with local and regional initiatives.

Local strategies and plans:

- SGC GI Strategy 2021;
- SGC Strategic GI Corridors Report (draft);
- SGC GI and Nature Recovery Action Plan to 2030; and
- SGC Annual Climate and Nature Emergency Action Plan.

Regional Strategies and plans:

- West of England Local Nature Recovery Strategy (LNRS);
- Joint GI Strategy;
- West of England Nature Partnership Prospectus;
- Bristol Avon Catchment Plan;
- Forest of Avon Plan; and
- West of England Climate and Ecological Strategy and Action Plan.

West of England Regional Programmes

A.3 A regional portfolio of strategic environmental programmes and projects is currently being prepared for launch in November 2024 which brings together programmes previously presented separately in the regional and local plans and strategies above. The West of England Regional Programmes are outlined below.

Western Forest

A.4 A new national forest covering Gloucestershire, the West of England and Wiltshire (aligning with the English side of the Western Gateway area). Key focus areas include the Cotswolds Scarp, North Somerset/South Bristol woodlands and the Cotswold-Mendip link. Increasing urban canopy cover is also a priority. The project has been successful in reaching the second stage of Defra's Forest for the Nation competition for which Forest of Avon Trust (FoAT), NSC and B&NES are leading on business case preparation. The successful bid will receive up to £10 million. **Related South Gloucestershire Council (SGC) Projects:** Lower Woods Link, Tree Canopy Project.

Limestone Link

A.5 A programme of calcareous habitat restoration at landscape scale. Aligning with Big Chalk may unlock funding e.g. through the Heritage Lottery Fund who have taken a strong interest in the initiative. Scope to collaborate with Gloucestershire, Wiltshire and Somerset, similar to Western Forest. **Related SGC Projects:** Lower Woods Link, South Gloucestershire Cotswold Scarp.

Severn Shoreline and Levels

A.6 A nature recovery and climate resilience focused programme on our Severn Estuary shoreline, which has the highest tidal ranges in the world. The programme will unite and seek to increase investment in nature-based solutions

via our two Levels partnerships (North Somerset and South Gloucestershire) plus the Severn Estuary Partnership. **Related SGC Projects:** Linking the Levels.

Restoring our Rivers

A.7 A programme of river restoration and water quality improvements, with a focus on fish recovery as per the Bristol Avon Fish Recovery Strategy. Salmon and eels may be useful focal species for the programme. The intention will be to build on the existing Catchment-based Approach, developing and implementing action plans for each sub-catchment. **Related SGC Projects:** River Frome Reconnected, Waterspace, Linking the Levels, Thriving Waters, Little Avon.

Nature towns and cities

A programme focused on urban nature recovery with an emphasis on benefits for people and communities, particularly in areas of multiple disadvantage. Partners will need to agree the specific aims of the programme that add value to existing initiatives. **Related SGC Projects:** Town and Parish Council Local Climate and Nature Action Plans, Community Nature Reserves, Nature and Health programmes, Urban Greening Factor (UGF) and Natural England GI Framework and standards being considered for Local plan policy and principles to embed GI at the start and across all stages of work and decision making.

30 by 30 and Local Wildlife Sites

A.8 Local Wildlife Sites (also called SNCIs – Sites of Nature Conservation Interest) cover 15% of the region and should make up the core of our LNRS and Nature Recovery Network, but little is known about their condition or management. This is a programme aimed at (1) understanding the condition of the West of England's SNCIs, (2) implementing an ongoing programme of monitoring and management to enhance their condition, and (3) designating more high nature value sites to help us meet our ambition to ensure 30% of

land is managed for nature by 2030. **Related SGC Projects:** Town and Parish Council Local Climate and Nature Action Plans (LCNAPs), SNCI Review Programme, Urban Greening Factor (UGF) and Natural England GI Framework and standards being considered for Local plan policy and principles to embed GI at the start and across all stages of work and decision making.

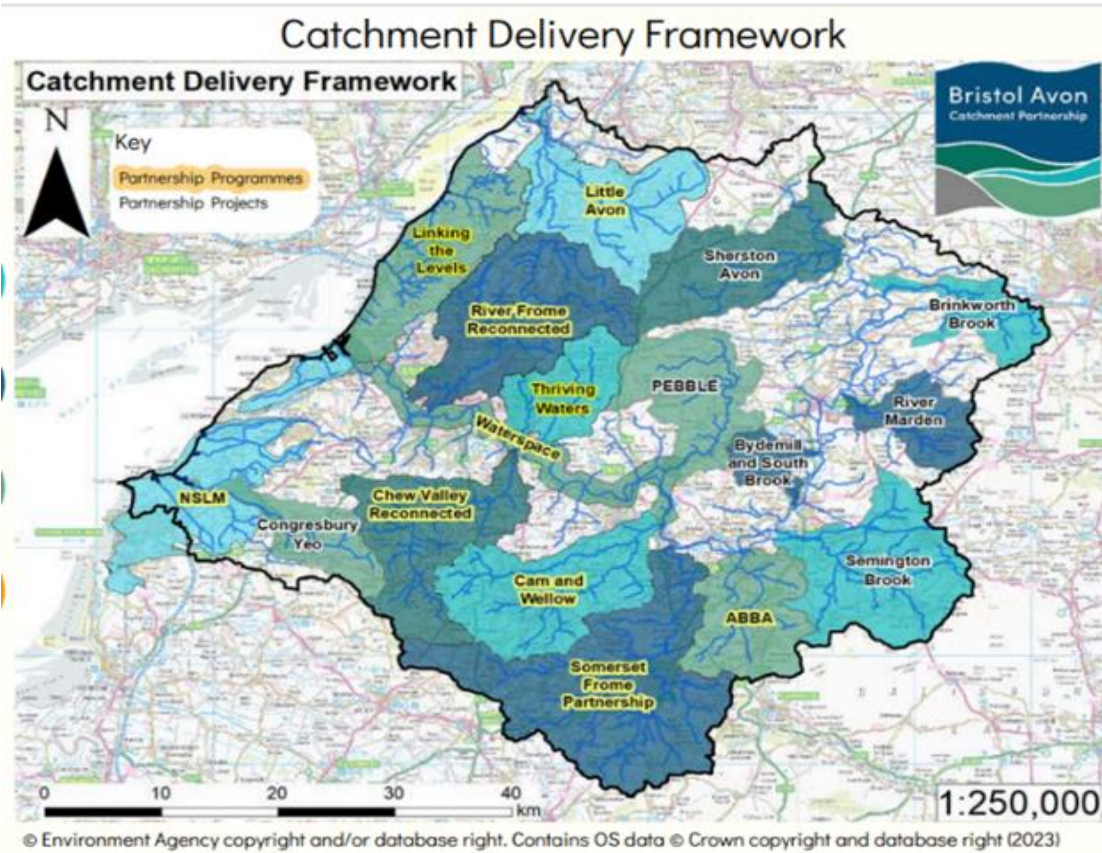
West of England State of Nature

A.9 A programme to develop robust, efficient and transparent reporting of the state of nature across the region (in line with WENP and WECA targets), plus other metrics such as people's engagement with nature, the amount invested in nature recovery and others as identified. A key work strand will be the development of a West of England Wildlife Index to monitor species abundance. Citizen science will be a cornerstone of the programme. **Related SGC Projects:** SNCI Review Programme, West of England Environmental data working group, Data gathering and Citizen Science opportunities across all GI and Nature Recovery programmes where appropriate, Monitoring towards WENP and LNRS targets.

Bristol Avon Catchment Partnership Delivery Programmes

For South Gloucestershire, these currently comprise River Frome Reconnected, Waterspace, Linking the Levels, Thriving Waters, and Little Avon.

Figure A.1: Catchment Delivery Framework



South Gloucestershire Strategic GI Programmes

Table A.1: Current strategic GI programmes (Produced January 2022, updated August 2024).

Strategic GI Programmes	Description	Location/Related GI Corridor	Stage of Development (as of August 2024)
<p>Common Connections</p>	<p>A four-year landscape scale nature recovery programme July 2022 – 2026 to restore and connect habitat including linking registered common land, unimproved grasslands, woodlands and associated habitats along the South Gloucestershire/East Bristol urban fringe.</p> <p>Objectives include:</p> <ul style="list-style-type: none"> ■ Improve condition and connectivity of grassland sites ■ Engage communities ■ Improve 67 of the 87 sites in the project <p>Habitat improvements will include:</p> <ul style="list-style-type: none"> ■ Reintroduction of grazing to conserve 	<p>Bristol Eastern Fringe and Corridor D.</p>	<p>At delivery stage. Project delivery is on track. Key outputs delivered to date:</p> <ul style="list-style-type: none"> ■ Site biodiversity improvements delivered/underway across 33 sites ■ Some 200 larger stock trees and 3,680 whips planted as hedgerows (equating to some 620 linear metres) ■ Over 2700 wildflower plug plants planted ■ Almost 8Ha of new or improved species rich grassland created ■ 2 new ponds and 4 permanent ponds improved

Appendix A South Gloucestershire Strategic GI Programmes

Strategic GI Programmes	Description	Location/Related GI Corridor	Stage of Development (as of August 2024)
	<p>and improve woodland pasture;</p> <ul style="list-style-type: none"> ■ Creation of pollinator-friendly and flower rich meadows; ■ Planting over 6,500 native trees; ■ Creation of 14 new community orchards; ■ Restoring and planting new hedgerows; ■ Improving existing ponds and creating new ones; and ■ Setting up hundreds of nesting boxes and shelters for owls, birds, bats and hedgehogs. 		<ul style="list-style-type: none"> ■ Access improvements ■ Planning application prepared for fencing on Siston Common to enable potential for grazing. ■ Community Nature Reserves (CNR) launched to support residents to manage residential gardens for nature in Emersons Green, Warmley, Willsbridge and Kingswood. Scope and interest for wider application across South Gloucestershire linked to Town and Parish Council Local Climate and Nature Action Plans (LCNAP).
Limestone Link	A large-scale programme to enhance the ecological connectivity of the Cotswolds Scarp between Lower Woods and Bath.	Corridors D and E	<p>Programme components at different stages from concept to delivery.</p> <p>Limestone Link Strategic Outline Business Case (SOBC) prepared by AtkinsRealis, commissioned by</p>

Appendix A South Gloucestershire Strategic GI Programmes

Strategic GI Programmes	Description	Location/Related GI Corridor	Stage of Development (as of August 2024)
	<p>Includes objectives for strategic grassland and woodland creation, as well as a focus on mixed habitats such as wood pasture and scrub that will contribute to both the woodland and grassland networks, building on existing stepping stones such as Dyrham Park. Supports and builds on the Cotswolds National Landscape Nature Recovery Plan, Big Chalk (see Cotswolds National Landscape Management Plan and Big Chalk) and takes into account the Scarps ecological and landscape character. Limestone Link will work with the developing farm clusters in this area to support environmental land management.</p> <p>There are three key programmes as listed below:</p>		<p>WENP and the Mayoral Combined Authority (MCA) working with partners and key stakeholders.</p>
<p>Limestone Link</p>	<p>Hawkesbury & Inglestone Commons</p> <p>Higher Tier Countryside Stewardship Scheme, also including Assley and Hareley Commons, which facilitates ongoing</p>	<p>Corridor D</p>	<p>Delivery stage.</p> <p>Managed under a 10-year Higher Tier Countryside Stewardship Scheme</p>

Appendix A South Gloucestershire Strategic GI Programmes

Strategic GI Programmes	Description	Location/Related GI Corridor	Stage of Development (as of August 2024)
	management for the benefit of all users, together with habitat enhancement.		
<p>Limestone Link</p>	<p>Lower Woods Link</p> <p>A project to create additional buffer and connecting habitats around Lower Woods and improve woodland links to Cotswold woodlands.</p> <p>Lower Woods are the most extensive area of ancient woodlands and seminatural woodland in the West of England and one of the largest ancient woodlands in the south-west of England, covering some three-square kilometres.</p> <p>Links with the Hawkesbury and Inglestone Common Countryside Stewardship funded programme.</p>	Corridor D	<p>Development stage.</p> <p>SOBC prepared by AtkinsRealis commissioned by WENP, MCA working with partners and key stakeholders.</p> <p>See also Hawkesbury and Inglestone Commons HLS, Forest of Avon Plan and Great Western Forest</p> <p>Also see Cotswolds National Landscape (CNL) Management Plan and Big Chalk.</p>
<p>Limestone Link</p>	<p>South Gloucestershire Cotswold Scarp</p> <p>Cotswolds National Landscape (AONB) are developing bids for landscape connections fund that may include some funding re wider</p>	Corridor E	<p>Concept stage.</p> <p>Referred to in Limestone Link Strategic Outline Business Case, though less scoped than other areas of the limestone Link programme.</p>

Appendix A South Gloucestershire Strategic GI Programmes

Strategic GI Programmes	Description	Location/Related GI Corridor	Stage of Development (as of August 2024)
	links/connectivity including Limestone link Opportunities to link with Big Chalk and wider area - North Wessex Downs and CNL		Aligns with and in scope of Cotswolds National Landscape (CNL) Management Plan and Big Chalk.
River Frome Reconnected	The River Frome Reconnected programme aims to coordinate partnership work to deliver the Frome Reconnected Catchment Plan to manage flood risk on the Bristol Frome, improve biodiversity and connect local communities to the river. The five related projects are listed below:	Corridor C	Delivery phase. The Catchment Plan and project portfolio have been prepared and agreed. Funding is secured to deliver specific components including the Resilient Frome programme, and further funding is being sought to deliver the full Bristol Frome Catchment Plan.
River Frome Reconnected	Frome Valley Walkway (FVW): Route enhanced for multi-users. Aims to enhance and improve the existing route as opportunities arise.	Corridor C The initial focus is around Yate, with aim to enhance the length of the FVW from source at the Cotswold scarp to central Bristol.	Development stage. Access audit of the FVW route has been undertaken and funding being sought to scope next steps.
River Frome Reconnected	Natural Flood Management (NFM): Working with landowners to deliver nature-based sustainable solutions to land and water	Corridor C Potentially expanding to Ladden Brook, and Bradley Stoke Brook	Delivery stage. Project being delivered through the Resilient Frome project [See reference 1], funded by the DEFRA Flood and

Appendix A South Gloucestershire Strategic GI Programmes

Strategic GI Programmes	Description	Location/Related GI Corridor	Stage of Development (as of August 2024)
	management in the catchment to improve catchment resilience, water quality and locally reduce flooding.	(overlapping with Corridor G).	Coastal Resilience Innovation fund.
River Frome Reconnected	Fish Recovery Plan: Preparation and delivery of a Bristol Frome Fish Recovery Plan. Work will include identifying and removing barriers to fish passage, habitat and water quality improvements in line with the Bristol Avon Catchment Partnership Fish Recovery Strategy	Corridor C	Funding secured, work to be commissioned shortly to prepare the Bristol Frome Fish Recovery Plan.
River Frome Reconnected	River Frome Nature Reserve: The aspiration for this project is to create a publicly accessible nature reserve on the River Frome in central South Gloucestershire.	Corridor C and Corridor G	Phase 1 land assembly is underway.
River Frome Reconnected	Support for the delivery of the Yate masterplan and Frome Gateway in Bristol	Corridor C	Development stage. Includes Natural flood management work through the Resilient Frome Programme in Yate Common. The Environment Agency are scoping and developing an outline business case for a

Appendix A South Gloucestershire Strategic GI Programmes

Strategic GI Programmes	Description	Location/Related GI Corridor	Stage of Development (as of August 2024)
			potential flood attenuation area upstream of Yate which will also deliver nature recovery benefits
Thriving Waters	A catchment-scale programme to improve the ecological status, health, and resilience of the neighbouring Siston Brook and River Boyd water catchments.	Corridor D and Corridor H	Concept stage. Initial development work being progressed through Common Connections for Siston Brook. To be included in the forthcoming updated Bristol Avon Catchment partnership Plan and the Restoring or Rivers programme in the new regional strategic environmental programmes pipeline.
Little Avon	A catchment-scale programme to improve the ecological status, health, and resilience of the Little Avon River catchment.	Corridor I	Concept stage. To be included in the forthcoming updated Bristol Avon Catchment Partnership Plan and the Restoring or Rivers programme in the new regional strategic environmental programmes pipeline.
Linking the Levels	A landscape scale nature recovery partnership programme which aims to restore, create, and connect habitat for nature and climate resilience across	Corridor A and Corridor B	Development stage. Two years of Green Recovery Fund funding has been secured from West of England Mayoral Combined

Appendix A South Gloucestershire Strategic GI Programmes

Strategic GI Programmes	Description	Location/Related GI Corridor	Stage of Development (as of August 2024)
	<p>the Lower Severn Vale, Levels and Shore of South Gloucestershire.</p> <p>The project builds on the legacy of the 'Forgotten Landscape Project' and vision for the 'String of Pearls' wetlands programme. it will focus on improving internationally important habitat for wild fowl and wading birds, and support critically endangered species such as the European eel, water vole, glow worm and white-clawed crayfish.</p> <p>Key sites include Aust wetlands (SGC owned), Oldbury Settlement lagoon (Nuclear Restoration Service) and Littleton Brickpits (Avon Wildlife Trust).</p>		<p>Authority to develop the full delivery programme and deliver some initial work on the ground until Summer 2026.</p>
<p>WaterSpace Connected</p>	<p>WaterSpace Connected is a large-scale green and blue infrastructure project following the River Avon corridor from Bath to Bristol, which emerged through the Waterspace Study [See reference 2].</p> <p>The project aims to create a healthy river valley that is rich in wildlife, and an improved recreational route</p>	<p>Corridor F</p>	<p>Delivery stage.</p> <p>The project delivery team is based with B&NES Council. Plans are being developed for a new vehicle-free bridge across the River Avon at Somerdale.</p>

Appendix A South Gloucestershire Strategic GI Programmes

Strategic GI Programmes	Description	Location/Related GI Corridor	Stage of Development (as of August 2024)
	between Bath and Bristol, where people can access and experience nature first-hand.		
Kingswood Park	<p>To restore and enhance the heritage, landscape and facilities of Kingswood Park to create an accessible green space which is resilient to the changing climate and where people can come together.</p> <p>This restoration project is part of the wider £25 million Kingswood Masterplan [See reference 3], a regeneration vision for Kingswood town centre.</p>	Within urban area of Kingswood, connections with Corridor D.	<p>Delivery stage.</p> <p>£2.5 million funding awarded by the National Lottery Heritage Fund to deliver a 3-year £3.36 million programme to restore the park and engage the local community.</p>
Grimsbury Community Farm	A council owned and managed community farm, providing a key public open space resource and facilities, farming education, skills and training and a showcase for sustainable land management, nature restoration and climate change adaption.	Within urban area of Kingswood, connections with Corridor D.	Business Plan at development stage to become financially independent. Within Common Connections programme area.

Appendix A South Gloucestershire Strategic GI Programmes

Strategic GI Programmes	Description	Location/Related GI Corridor	Stage of Development (as of August 2024)
Yate spur shared use path, Yate	A project to connect Yate with the Bristol and Bath Railway Path, by providing a continuous off-carriageway 'green corridor' for commuting, leisure and recreation.	South of Yate, Corridor D	Delivery stage. Delivery is underway. Public consultation was undertaken between March and April 2022, with the Council response published October 2022. There was an overwhelming 96% support for the scheme.
South Gloucestershire Council Wildways	Aims to close gaps in the Nature Recovery Network, linking clusters of locally designated sites that could be better connected for wildlife through land purchase, land management agreements or small-scale nature connectivity enhancements like hedgerow restoration, tree planting or wildlife corridor creation. This is not centred on SGC owned land, but on any suitably located clusters of privately owned designated sites.	Wildway 1 - Corridor D Wildway 2 - Corridor B Wildway 3 - Corridor C	Concept stage. So far three local scale projects have been identified and worked up in the concept stage.

Appendix A South Gloucestershire Strategic GI Programmes

Strategic GI Programmes	Description	Location/Related GI Corridor	Stage of Development (as of August 2024)
<p>Tackling Transport Severance</p>	<p>A network-scale programme to identify and tackle habitat severance caused by transport infrastructure.</p> <p>Includes scoping priorities for retrofit of safe passage tunnels, green routes across bridges, dark skies, highway run off mitigation to prepare a portfolio of agreed, costed retrofit projects for seeking funding.</p> <p>Also to identify, develop and embed best practice for new infrastructure design aligned with corporate commitments and latest statutory requirements regarding biodiversity.</p> <p>Projects include:</p>	<p>Across South Gloucestershire and all GI corridors</p>	<p>Development stage.</p> <p>To be included in the forthcoming regional strategic environmental programmes pipeline and integrated in strategic GI programmes, including Linking the Levels and Thriving Waters.</p> <p>Includes SGC managed highways and drainage infrastructure and potential locations on motorway network in collaboration with National Highways.</p> <p>Propose to include key principles and practice in relevant Local Plan policy and advice.</p>
<p>Tackling Transport Severance</p>	<p>Safe passages for nature over the M4</p> <p>This project would see strategically placed wildlife tunnels or green bridges to address severance issues within the Cotswolds National Landscape caused by the M4. An example location is around the woodland and grassland</p>	<p>Corridor E</p>	<p>Ongoing / in development as of August 2024. Some interventions have already been delivered; however, further scoping is needed to identify additional future interventions.</p>

Appendix A South Gloucestershire Strategic GI Programmes

Strategic GI Programmes	Description	Location/Related GI Corridor	Stage of Development (as of August 2024)
	strategic network at Tormarton.		
Tackling Transport Severance	<p>Safe passage for nature over the M5</p> <p>Similar to the above project, this will see strategically placed wildlife crossing points across the M5, including wildlife tunnels and green bridges. An example location being explored is around Thornbury.</p>	Corridor B	Ongoing / in development as of August 2024. Some interventions have already been delivered; however, further scoping is needed to identify additional future interventions.
Tree Canopy Project	<p>A regional programme to deliver tree planting, establishment and maintenance aligned with best practice and to enable natural regeneration where appropriate.</p> <p>The programme aims to double tree canopy cover across South Gloucestershire and care for existing trees and woodlands, to deliver outcomes for nature recovery, climate adaptation and resilience, landscape character and amenity.</p>	Across South Gloucestershire and all GI corridors	<p>Delivery stage.</p> <p>Currently delivering £1.1 million Green Recovery Fund project (until September 2026) to plant trees on council owned land.</p> <p>Tree planting also underway as part of other strategic GI programmes (e.g. Common Connections, Resilient Frome and Town and Parish Council Local Climate and Nature Action Plans).</p> <p>Concept stage work to support wider delivery of tree planting on third party owned land</p>

Appendix A South Gloucestershire Strategic GI Programmes

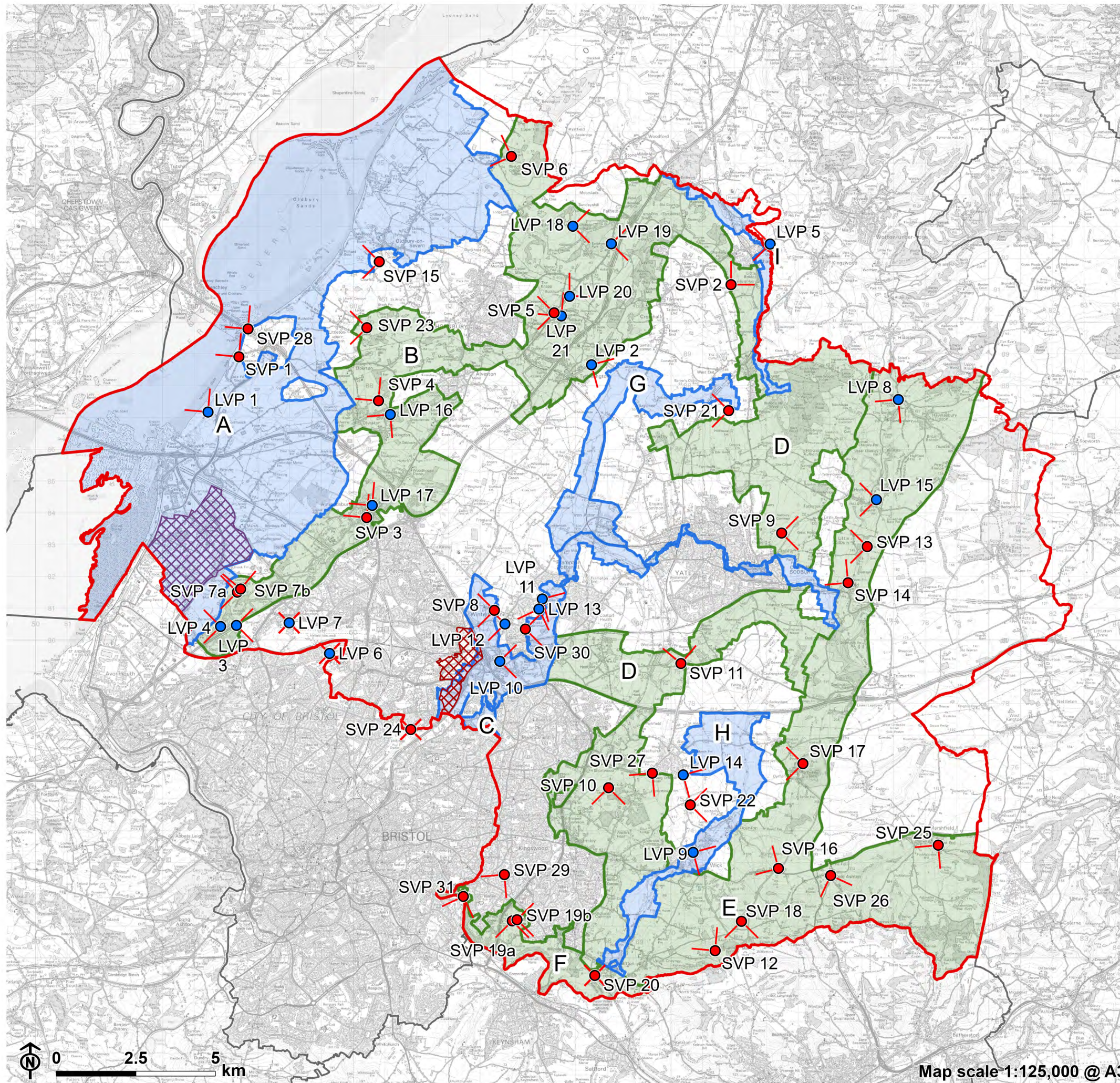
Strategic GI Programmes	Description	Location/Related GI Corridor	Stage of Development (as of August 2024)
			through the Western Forest and delivery of the Forest of Avon Plan.
Local Climate and Nature Action Plans (LCNAP)	SGC Biodiversity team is working with Town and Parish Councils to prepare and deliver Local Climate and Nature Action Plans (LCNAP). LCNAPs support and complement the South Gloucestershire Biodiversity Action Plan and Climate and Nature Emergency Action Plan.	Across South Gloucestershire and all GI corridors.	<p>Delivery stage.</p> <p>Over 20 LCNAPs prepared and delivery underway in South Gloucestershire. A part time coordinator is in post.</p> <p>LCNAP guidance has been prepared and published online, and training and practice sharing events are held regularly.</p> <p>The LCNAP model and resources are being replicated by other UAs locally and nationally.</p>

Appendix B

Key Viewpoints

B.1 The key strategic and local viewpoints in South Gloucestershire are provided in Table B.1 and B.2. The ID number corresponds to the strategic viewpoint number included in the audit for each corridor (in Chapters 6-14 inclusive). The table is supported by a map of strategic viewpoints.

Figure B.1: Strategic Viewpoints



- South Gloucestershire
 - Neighbouring local authority
 - Green Infrastructure Corridor
 - Blue-Green Infrastructure Corridor
- Viewpoint type**
- Local viewpoint
 - Strategic viewpoint
- Viewpoint angle**
- / Illustrative viewpoint angle
 - X Panoramic view
- Corridor name**
- A Shepperdine-Oldbury on Severn-Severn Beach (Severn Estuary and Levels)
 - B Charfield-Alveston-Hallen (Western Scarp/Severn Ridges)
 - C Winterbourne-Kendleshire-Yate (River Frome Corridor)
 - D Wickwar-Westerleigh-Biton (Westerleigh Vale/Oldland Ridge/East Fringe)
 - E Hawkesbury-Upton Cheyney-Ashwicke (Cotswold Scarp and Ashwicke Ridges)
 - F Hanham Green-Hanham Abbots-Biton (Avon Valley)
 - G Wickwar-Iron Acton (Ladden Valley)
 - H Hinton-Doynnton-Biton (Boyd Valley)
 - I Huntingford-Charfield-Wickwar (Little Avon River Corridor)
- The committed development area of Severnside (South Gloucestershire Policy CS35)
 - The committed development area of East of Harry Stoke (South Gloucestershire Policy CS27)

Table B.1: Strategic Viewpoints

Corridor	Id	Location / place	Description
A	SVP 1	Redwick	Old Passage - panoramic views north and west over Severn Estuary and Severn bridges.
B	SVP 2	Charfield	View from Churchend – panorama (north and east).
B	SVP 3	Almondsbury	View from Almondsbury scenic viewpoint, Over Lane - panorama (over levels landscape north and west).
B	SVP 4	Old Down & Thornbury	Views from Old Down - west and south-west (across levels landscape).
B	SVP 5	Old Down & Thornbury	View from A38/Whitewall Lane junction– north-west (across ‘bowl’ landscape of Thornbury, with Severn estuary beyond).
B	SVP 6	Hill	View from St Michael’s Church (Hill Court) and Oldbury levels - south and west.
B	SVP 7a and 7b	Spaniorum and Cribbs Causeway	View from Spaniorum Hill – west (wide ranging views across estuary and Pilning levels landscape).
C	SVP 8	Winterbourne	View from Church Lane/Green Lane junction, Winterbourne – views west towards Bradley Stoke and Patchway across valley.
D	SVP 9	Chipping Sodbury	View from Sodbury Common – panorama.

Appendix B Key Viewpoints

Corridor	Id	Location / place	Description
D	SVP 10	Siston	View from Community Forest path to west of Siston Court – panorama (views west and south).
D	SVP 11	Westerleigh	View north and west from top of Westerleigh Hill across Yate vale and Coalpit Heath.
E	SVP 12	Lansdown	View from Hanging Hill/ Lansdown Battlefield – panorama.
E	SVP 13	Chipping Sodbury	Little Sodbury Hillfort – panorama.
E	SVP 14	Chipping Sodbury	View from west of St John's churchyard and PRow at Old Sodbury – Panorama north and west.
Outside	SVP 15	Old Down and Thornbury	Saint Arilda's Church, Cow Hill – Panorama (north, south and west over Severn vale and Estuary).
E	SVP 16	Marshfield	View from Tog Hill picnic site – Panorama north-south and west.
E	SVP 17	Dyrham	View from viewing point at top of Dyrham deer park – panorama from edge of scarp within the deer park west to vale and to earthworks at Hinton.
E	SVP 18	Wick & Lansdown	View from Freezing Hill – panorama.
F	SVP 19a and 19b	Longwell Green	View from Hanham Hills – panorama.
F	SVP 20	Bitton	View from Bristol-Bath cycle path – panorama.

Appendix B Key Viewpoints

Corridor	Id	Location / place	Description
G	SVP 21	North Yate Vale	View from Wickwar Ridge - view north-west across Yate Vale and Rangeworthy.
H	SVP 22	Abson	View from Abson Road south of St James' Church – Panorama looking east across valley to Cotswold scarp.
B	SVP 23	Old Down and Thornbury	Woodwell Meadow, Littleton Upon Severn – panorama west over Levels landscape and Estuary.
Outside	SVP 24	Stoke Park	View from the Dower House Stoke Park – panorama south, east, and west.
Outside	SVP 25	Marshfield	View from East End Marshfield – views to south across valley to Henley Hill.
Outside	SVP 26	Cold Ashton	View from seating area Cold Ashton – views south across St. Catherine's Valley.
Outside	SVP 27	Pucklechurch	View from Shortwood Hill, south-west edge of Pucklechurch – panorama (views south and west across Siston towards Kingswood & Warmley; views south and east towards Cotswolds scarp - Freezing Hill and Lansdown).
Outside	SVP 28	Redwick	View from Severn View viewpoint – panorama over the Severn Estuary, Wales and north to Oldbury power station.
Outside	SVP 29	Kingswood	View from Mount Hill, Hanham – Panorama south and east.
Outside	SVP 30	Winterbourne	Flax Pits Pond, Hicks Common Road – views east across the Frome Valley.
F	SVP 31	Hanham	Avon Valley Panorama Viewpoint – views south and south-west along the Avon Valley.

Appendix B Key Viewpoints

Table B.2: Local Viewpoints

Corridor	Id	Location / place	Description
A	LVP 1	Northwick	View from Severn Way – panoramic views over Severn bridges and estuary to Wales.
B	LVP 2	Old Down & Thornbury	View from Baden Hill, Tytherington – panoramic (south and east).
B	LVP 3	Spaniorum and Cribbs Causeway	View from M5 overbridge /gateway at Haw Wood – east (extensive views eastwards across Filton, to east fringe and Cotswolds).
B	LVP 4	Spaniorum and Cribbs Causeway	View from woodland edge north of M5 at Hallen – west and south-west (over estuary and Avonmouth to south-west).
Outside	LVP 5	Charfield	View from Elbury Hill – panorama west over Charfield and Tortworth beyond.
Outside	LVP 6	Filton & Frenchay	View from Filton golf course – panorama north and west.
Outside	LVP 7	Spaniorum and Cribbs Causeway	View from earth sculpture south of Lysander Road Cribbs Causeway – panorama, views to south, east and west.
E	LVP 8	Hawkesbury Upton	Hawksbury Monument – panorama west and north.
H	LVP 9	Wick	View from Wick Rocks – View of the Boyd valley and across quarry to Cotswold scarp and Freezing Hill.

Appendix B Key Viewpoints

Corridor	Id	Location / place	Description
C	LVP 10	Winterbourne	Whiteshill Common – view towards Winterbourne Hill.
Outside	LVP 11	Winterbourne	Beaver Close – view across the Frome Valley towards Frampton Cotterell.
Outside	LVP 12	Winterbourne	View east from Winterbourne Hill (road) across the Bradley Brook valley, towards Harry Stoke and Stoke Gifford.
Outside	LVP 13	Winterbourne	Cloisters Road – view along the Frome valley towards Huckford Viaduct.
Outside	LVP 14	Pucklechurch	Redford Lane/Abson Road – view south and south-east across the Byd Valley and east towards the Cotswold Scarp.
E	LVP 15	Horton	View west from Horton Camp Hillfort.
B	LVP 16	Old Down	View from Tockington Hill.
B	LVP 17	Almondsbury	View west from The Scop playing field.
Outside	LVP 18	Falfield	Footpath to the west of Falfield village – view east towards Falfield and the Cotswold Scarp.
B	LVP 19	Falfield	View east from A38 over Falfield vale and towards the Cotswold Scarp.
B	LVP 20	Buckover	View west and north-west across the Falfield vale.
B	LVP 21	Milbury Heath	View from Cuttsheath Road - west and north-west.

Appendix C

Boundary rationalisation decision-making

C.1 The list below provides a summary of small-scale instances where the boundary rationalisation process deviated from the three main criteria (as summarised in **Error! Reference source not found.:** Methodology).

Boundary between Corridors E and H at Doynton

- Problem: Dissecting a Conservation Area.
- Solution: Follow the road and Cotswolds National Landscape boundary as this is recognisable on the ground but means Doynton Conservation Area is split into two corridors.

Boundary between Corridors C and G at Iron Acton

- Problem: Dissecting a Conservation Area.
- Solution: Draw the boundary between the two corridors along the railway, excluding the small extension of the Iron Acton Conservation Area at Algors Manor from Corridor G (north) and thereby including this small extension in Corridor C. The boundary between the corridors then turns west off the railway on the road to Elm Farm, before continuing south-west on the road, tracing the west edge of the River Frome.

Corridor E at Dodington

- Problem: The Cotswolds National Landscape boundary cuts through the Visually Important Hillside.

Appendix C Boundary rationalisation decision-making

- Solution: Extend the boundary beyond the Cotswolds National Landscape boundary to include the Visually Important Hillside (rising scarp) within Corridor E which is one of the reasons behind its importance and purpose.

Boundary between Corridors D, E and C west of Old Sodbury

- Problem: Dissecting a Site of Nature Conservation Importance.
- Solution: Follow Cotswolds National Landscape boundary, the road from Old Sodbury south to Dodington and the Registered Park and Garden boundary, which results in cutting off the easternmost section of the River Frome SNCI (which doesn't follow a recognisable boundary). This easternmost section still sits within a corridor (Corridor E).

Corridor C through Chipping Sodbury and Yate

- Problem: Drawing boundaries of river corridors through settlements where OS mapped boundaries are not always clearly defined.
- Solution: Follow curtilage of houses and gardens where there is no recognisable boundary (e.g., field boundary or road) and also expand the corridor to encompass important designations such as the Conservation Area (despite this meaning the settlement is included within the corridor).

Boundary between Corridors B, I and D at Wickwar

- Problem: To determine where to draw boundaries between Corridors B, I and D given the south easterly extension of the Little Avon River SNCI. Also, to determine what OS mapped features to use as the corridor boundary.
- Solution: Extend Corridor B along the length of Corridor I to encompass Wickwar Conservation Area and finish at the road boundary south of Poplar Farm (note this was a large extension to the initial northern Corridor B boundary which ended north of Charfield). Continue Corridor I boundary to include the entire Little Avon River SNCI to its boundary with Lower

Appendix C Boundary rationalisation decision-making

Woods SSSI and Wetmoor Complex SNCI. The eastern side of Little Avon River SNCI (along the river course) is used as the eastern boundary of Corridor I and western boundary of Corridor D given the issue faced with following OS mapped features near Sturt Farm.

North west boundary of Corridor G south of Stidcot

- Problem: Nearest physical boundary to follow on the ground is small tributary of the Ladden Brook. However, including adjoining grassland habitat either side of the watercourse will contribute towards the functionality of the corridor.
- Solution: Cut across the adjoining field at the two narrowest parts and where aligning with the field corner will allow for easy demarcation when on the ground.

Boundary between Corridor A and Corridor B at Olveston

- Problem: Dissecting a Conservation Area
- Solution: Minor discrepancy in the road edge followed by the Corridor boundary and the Conservation Area boundary.

Boundary of Corridor B at Thornbury

- Problem: Dissecting a Conservation Area
- Solution: Corridor boundary follows the access track to lower Marlwood Farm.

Boundary of Corridor C at Chipping Sodbury

- Problem: Dissecting a Conservation Area
- Solution: Corridor boundary follows course of the River Frome through Chipping Sodbury and excludes land to the north of the river and south of Barnhill Road.

Boundary between Corridor D and Corridor H near Bitton Hill

- Problem: Dissecting a Regionally Important Geological Site
- Solution: Corridor follows road edge on 1:25,000 OS basemap whilst Bitton Hill Sand Pit follows road centreline.

C.2 The tables below provide a summary of the changes made to the strategic GI corridor boundaries following SGC's Local Plan Stage 2 consultation.

Table C.1: Corridor A

Change	Reason
Removal of fields to the north-west of Newton, north of Thornbury.	Removed as part of the district-wide review of 'white land'.
Removal of land in the north of Corridor A around Tranton Lane and Stuckmoor Lane.	Removed as part of the district-wide review of 'white land'.

Table C.2: Corridor B

Change	Reason
Removal of Cleve Park site to the east of Thornbury.	Planning permission has been obtained.
Removal of Almondsbury Airbase and surrounding land.	Removed as part of the district-wide review of 'white land'.
Removal of fields to the north-east of Almondsbury.	Removed as part of the district-wide review of 'white land'.
Removal of the land to the south of Lower Stone.	Removed as part of the district-wide review of 'white land'.
Removal of land south of Poplar Lane, Wotton-under-Edge.	Completed development site.

Appendix C Boundary rationalisation decision-making

Change	Reason
Removal of land to the east of Newton, north of Thornbury.	Removed as part of the district-wide review of 'white land'.
Removal of northern settlement edge at Alveston.	Removed as part of the district-wide urban edge interface review.
Removal of land around Lower Marlwood Farm and Beech Farm to the west of Thornbury.	Removed as part of the district-wide review of 'white land'.
Removal of land around Willow Farm to the west of Thornbury.	Removed as part of the district-wide review of 'white land'.
Removal of land to the east of Littleton-upon-Severn.	Removed as part of the district-wide review of 'white land'.

Table C.3: Corridor C

Change	Reason
Removal of properties on the western edge of Frampton Cotterel around Harris Barton and Park Lane.	Removed as part of the district-wide urban edge interface review.
Removal of properties along Church Lane in Frampton Cotterel.	Removed as part of the district-wide urban edge interface review.
Removal of fields at Hicks Common in Winterbourne.	Removed as part of the district-wide review of 'white land'.
Addition of field at Flaxpits, north of the railway line.	Added to strengthen the connectivity of the Wetland Strategic Network.
Removal of land at Harry Stoke strategic sites to the east of Stoke Gifford.	Planning permission has been obtained. Retention of some land adjacent to the M32 and M4 to reflect GI buffers designed in as part of masterplan.
Removal of land to the west of Winterbourne at Church Lane and Beacon Lane.	Removed as part of the district-wide review of 'white land'.

Appendix C Boundary rationalisation decision-making

Change	Reason
Removal of land south of Swan Lane and properties at Ferndale Farm, west of Winterbourne.	Removed as part of the district-wide review of 'white land'.
Removal of arm to the south of Nibley and west of yate, including unnamed tributary.	Removed as part of the district-wide review of 'white land'.
Removal of land at Waitrose and Barnhill Car Park in Chipping Sodbury.	Removed to reflect completion of this site and the new land use of car parking.
Removal of field north of Mill Lane, west of Old Sodbury.	Removed as part of the district-wide review of 'white land'.

Table C.4: Corridor D

Change	Reason
Removal of land to the west of Westerleigh and to the south of the railway line around Broad Lane.	Removed as part of the district-wide review of 'white land'.
Addition of land around Folly Brook to the north of the M4.	To enhance the connectivity of Folly Brook.
Addition of Rosary Site of Nature Conservation Importance at Lyde Green.	To reinforce the importance of the SNCI in an area experiencing considerable growth.
Removal of land to the east of Holbrook Common.	Removed as part of the district-wide review of 'white land'.
Removal of land to the east of Codrington and to the south of The Players Golf Club.	Removed as part of the district-wide review of 'white land'.

Appendix C Boundary rationalisation decision-making

Change	Reason
Removal of the eastern edge of Corridor D between Frome Bridge / A432 in the south and Oakfield Farm / Stevens Farm in the north. Bring eastern boundary of Corridor D back to edges of Sodbury Common at Little Sodbury End and Harwoodgate Farm.	Removed as part of the district-wide review of 'white land'.
Removal of land between Chipping Sodbury and Old Sodbury, around Fattening House Farm and Millstone Farm to the south of the South Wales Main Line.	Removed as part of the district-wide review of 'white land'.

Table C.5: Corridor E

Change	Reason
Addition of St Catherine's Valley.	Added to reflect the importance of the area for both the woodland and grassland strategic network, as well as the landscape value of the valley, as identified within the Bathscape Project.
Removal of land to the east of Wick around Horsepool Farm, Limebrook Farm and Perry's Farm.	Removed as part of the district-wide review of 'white land'.
Removal of land to the south-west of Dyrham and north-east of Doynton.	Removed as part of the district-wide review of 'white land'.

Table C.6: Corridor F

Change	Reason
Removal of properties in Hanham and Conham, including at Common Road, Gays Road, Memorial Road, Henderson Road, Hawkesbury Drive and Lime Road.	Removed as part of the district-wide urban edge interface review.

Table C.7: Corridor G

Change	Reason
Removal of land to the north-east of Latteridge.	Removed as part of the district-wide review of 'white land'.
Removal of land to the north of Lark's Farm.	Removed as part of the district-wide review of 'white land'.
Removal of land to the south of Stidcot.	Removed as part of the district-wide review of 'white land'.
Removal of field to the north-east of Ashworthy Farm.	Removed as part of the district-wide review of 'white land'.
Removal of land to the south of Endland's Farm.	Removed as part of the district-wide review of 'white land'.

Table C.8: Corridor H

Change	Reason
Removal of land to the north-east of Pucklechurch around St Aldam's Well.	Removed as part of the district-wide review of 'white land'.
Removal of part of the Feltham Brook corridor, including land between Gatherham Farm at Ham Lane in the south, and Redford Lane in the north.	Removed as part of the district-wide review of 'white land'.

Appendix C Boundary rationalisation decision-making

Change	Reason
Removal of land around Bottom's Farm and Wilke's Farm.	Removed as part of the district-wide review of 'white land'.
Addition of land around Home Farm and at Rookery Lane.	To reinforce the connectivity of the corridor between the River Boyd and Feltham Brook.
Removal of properties at Naishcombe Hill in Wick.	Removed as part of the district-wide urban edge interface review.
Removal of properties at High Street / A420 in Wick.	Removed as part of the district-wide urban edge interface review.
Removal of land at Golden Valley / Bitton Mill, Bitton.	Completed development site. Area of the site preserved for woodland adjacent to the River Frome has been retained in Corridor H.

Table C.9: Corridor I

Change	Reason
Removal of land to the west of the M5.	Removed as part of the district-wide review of 'white land'. Severance by the M5 means connectivity of the corridor is lost.

C.3 The tables below provide a summary of the changes made to the strategic GI corridor boundaries following SGC's Local Plan Stage 3 consultation. Corridors E to H are unchanged.

Table C.10: Corridor A

Change	Reason
Minor amendments around Almondsbury Conservation Area due to discrepancies in digitising	Boundary updated to reflect Almondsbury Conservation Area boundary revision

Table C.11: Corridor B

Change	Reason
Inclusion of field and Woodlands Wood adjacent to A38/M5/M4 at Almondsbury	To enhance continuity and connectivity within the GI network
Inclusion of field and woodland belt north of Tortworth Green between Tortworth Road and B4509.	To include the NE corner of Tortworth Park which falls just outside the designated Registered Park and Garden, due to an error in the formal designation

Table C.12: Corridor C

Change	Reason
Inclusion of fields west of River Frome known as Cloisters and Hick's Common fields in Winterbourne	Extended to include VIH
Inclusion of Sims Hill woodland	To enhance continuity and connectivity within the GI network

C.4 Consultees proposed that the properties at Harris Barton should not be included. No change has been applied as there is a discrepancy between the OS 25k basemapping and available aerial photography.

Table C.13: Corridor D

Change	Reason
Inclusion of fields west of Leigh Farm.	To include more of Pucklechurch Ridge VIH.

Table C.14: Corridor I

Change	Reason
Removal of field to west of M5 and two fields to east of M5, north of Crockley’s Farm.	Field west of M5 removed as not related to river corridor. The two fields to the east of the M5 relate better to adjacent GI Corridor B than the Little Avon River corridor, so have been reallocated accordingly.
Remove field to NW of Park Farm, Charfield	Not related to river corridor.

Appendix D

Background to GI assets

D.1 To provide background to the assets included within this project, below is the list of GI assets included within the Core Strategy Appendix 3 (Table D.1) followed by the GI SPD asset list (Table D.2).

Table D.1: Core Strategy Appendix 3 GI asset list

Local/Site Scale	Neighbourhood Scale	District Scale	Regional & Sub-Regional Scale
Private gardens	Allotments and orchards	Local Nature Reserves (LNRs)	Internationally & nationally designated sites (e.g. Cotswolds AONB / CNL, SPA/SAC – The Severn Estuary, SSSIs
Green roofs and walls	Footpath and cycleway network	River corridors & their floodplains (Boyd and Ladden Brook)	South West Nature Map ('West of England Nature Recovery Network mapping')
SuDS (Sustainable Drainage Systems)	Parks, play areas, playing fields, village greens and amenity green spaces	Locally Designated sites, SNCIs and RIGS	National Trail (Cotswold Way) and promoted routes (The Dramway, Community Forest Path, Frome Valley Walkway, Jubilee Way, Rive Avon Trail, Monarch's
Watercourses and ponds	Sites of archaeology and cultural heritage	Larger parks and amenity greenspace	
Hedgerows	Woodlands and nature reserves	Strategic Footpath and cycleway network	
Footpath and cycleway network	Cemeteries and Churchyards	Historic Parks and Gardens	
Landscape features and screens	Watercourses, floodplains, ponds, rhines and flood attenuation areas	Visually important landscapes and features (such as	
Trees			
Amenity greenspace			
Children's and Young Peoples play space			

Appendix D Background to GI assets

Local/Site Scale	Neighbourhood Scale	District Scale	Regional & Sub-Regional Scale
	Countryside under agri-environmental stewardship	hillsides and ridgelines), Historic landscapes Open access land The commons Nature Reserves (Lower Wood Nature Reserve) Ancient Woodland Landscape Character Areas	Way, Severn Way & Thornbury Link) National Cycle Network & Avon Cycleway (including the Bristol & Bath Railway Path) Major River Corridors/ Estuary (Avon, Frome and Severn Estuary) & their floodplains

Table D.2: GI SPD asset list

Larger scale or rural elements	Smaller scale and urban elements
Parks Communal gardens Woodland Sustainable drainage features such as ponds, swales and reed beds Streams Canals Marshland Scrub Species rich grassland Orchards and food growing opportunities Hedgerow network Green active travel routes	Green roofs Private gardens Green walls Street trees Rain gardens Hedges Permeable paving Wildflower verges Habitat enhancements such as nest boxes Allotments and food growing opportunities Natural play Footpath and cycle ways

References

- 1 Environment Agency (no date). Resilient Frome. Available at: <https://engageenvironmentagency.uk.engagementhq.com/bri001-frome>
- 2 Bath & North East Somerset Council (no date). WaterSpace Study. Available at: [WaterSpace Study | Bath and North East Somerset Council \(bathnes.gov.uk\)](https://www.bathnes.gov.uk/waterspace-study)
- 3 South Gloucestershire Council (May 2022). Kingswood Masterplan. Available at: [Kingswood Masterplan | BETA - South Gloucestershire Council \(southglos.gov.uk\)](https://www.southglos.gov.uk/kingswood-masterplan)

Report produced by LUC

Report produced by LUC

Bristol

12th Floor, Beacon Tower, Colston Street, Bristol BS1 4XE
0117 929 1997
bristol@landuse.co.uk

Edinburgh

Atholl Exchange, 6 Canning Street, Edinburgh EH3 8EG
0131 202 1616
edinburgh@landuse.co.uk

Glasgow

37 Otago Street, Glasgow G12 8JJ
0141 334 9595
glasgow@landuse.co.uk

London

250 Waterloo Road, London SE1 8RD
020 7383 5784
london@landuse.co.uk

Manchester

6th Floor, 55 King Street, Manchester M2 4LQ
0161 537 5960
manchester@landuse.co.uk

landuse.co.uk

Landscape Design / Strategic Planning & Assessment
Development Planning / Urban Design & Masterplanning
Environmental Impact Assessment / Landscape Planning & Assessment
Landscape Management / Ecology / Historic Environment / GIS & Visualisation